

FRENCH HORN

SIXTY SELECTED STUDIES

(Kopprasch/Kalmus)

NOTE: NO REPEATS ARE TO BE TAKEN IN ANY EXERCISE.

Page 34, #46

YEAR A

Adagio

♩ = 68-72

Play from the beginning to the middle C eighth note before the double bar on line 4.

Known Errata:

In measure 2 of line 4, each B should have a natural on it.

Page 27, #37

Allegro

♩ = 84-92

Start in measure 12 and play to the end.

Page 45, #59

YEAR B

Larghetto

♩ = 60-72

Play first three lines.

Page 37, #50

Presto

♩ = 96-112

Start in measure 4 of line 4 and play to the end.

Known Errata:

1. Play B \natural throughout measure 15 and 17.
2. Measure 25, the G \natural on the 2nd triplet should be G \sharp .
3. The F \sharp in measure 19 on beat 3 should be an F double sharp.

Page 40, #53

YEAR C

Largo

♩ = 80

Play first four lines.

Pages 38-39, #52

Allegro vivace

♩ = 92-104

Play from the beginning to the quarter rest in measure 23.

Known Errata:

1. Measure 13, second 16th note should be a C \sharp (the remaining C's in the measure are C natural).

Page 15, #22

YEAR D

Adagio espressivo

♩ = 80

Play from the beginning through measure 2 of line 4. Disregard the dotted eighth D and sixteenth note E on beat four of measure 12 and play the D trill with the slurred C and D Nachschlag instead.

Page 32, #43

Allegretto

♩ = 92-104

Play from the beginning to beat 1 of measure 5 on line 5.

Page 36, #49

YEAR E

Adagio

♩ = 100-120

Play first three lines.

Page 13, #19

Allegro

♩ = 48-56

Play from the beginning through measure 2 of line 7.

Known Errata:

1. There should be no A \sharp accidental in measure 8. It is an A \natural .

ATSSB French Horn Scales in F

Scales should be performed as written and may or may not be performed connected. All scales are to be played at a minimum of $\text{♩} = 120$.
Scales should be performed in order without delay between scales.

1. Concert G (written D) Major Scale



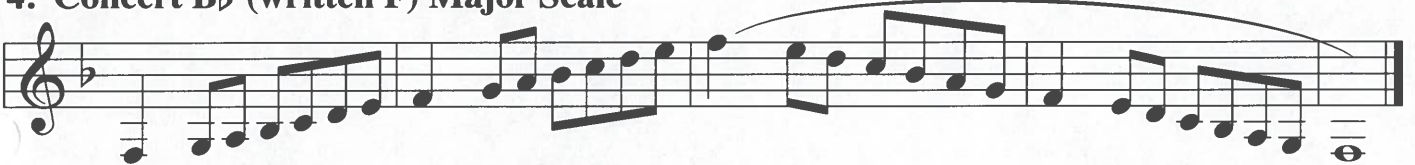
2. Concert C (written G) Major Scale



3. Concert F (written C) Major Scale



4. Concert B \flat (written F) Major Scale



5. Concert E \flat (written B \flat) Major Scale



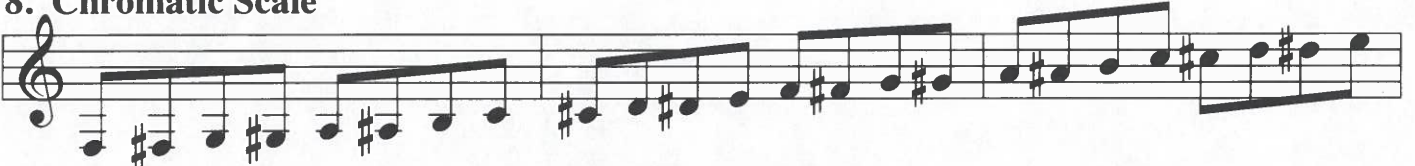
6. Concert A \flat (written E \flat) Major Scale



7. Concert D \flat (written A \flat) Major Scale



8. Chromatic Scale



p *cresc.* *f*
m *f* *p* *f*

Nr. 22 Adagio espressivo (Achtel) (quaver)

p dolce *f* *mf* *f* *p dolce* *f*

Ausführung - Played

Nr. 43 Allegretto

espressivo

p

f

p

cresc.

f

p

f

m

This musical score for Nr. 43 Allegretto consists of seven staves. The first staff begins with a dynamic marking of *mf* and the instruction *espressivo*. The second staff starts with a *p* dynamic. The third staff features a *f* dynamic. The fourth staff begins with *p* and includes a *cresc.* marking. The fifth staff starts with *p* and ends with *f*. The sixth staff begins with *f* and ends with *m*. The seventh staff starts with *f*. The score is heavily annotated with diagonal slash marks, indicating a specific performance or editing choice.

Nr. 44 Allegro

cresc.

f

p

cresc.

tr

tr

tr

tr

p

This musical score for Nr. 44 Allegro consists of seven staves. The first staff includes a *cresc.* marking. The second staff starts with *f* and ends with *p*. The third staff begins with *cresc.*. The fourth staff features *tr* markings. The fifth staff also has *tr* markings. The sixth staff includes *tr* markings and a *p* dynamic. The seventh staff starts with *p*. The score is heavily annotated with diagonal slash marks, indicating a specific performance or editing choice.