

ATSSB E \flat Alto & Baritone Saxophone Scales

Scales should be performed as written and may or may not be performed connected. All scales are to be played at a minimum of $\text{♩} = 120$

1. Concert G (written E) Major Scale



2. Concert C (written A) Major Scale



3. Concert F (written D) Major Scale



4. Concert B \flat (written G) Major Scale



5. Concert E \flat (written C) Major Scale



6. Concert A \flat (written F) Major Scale



7. Concert D \flat (written B \flat) Major Scale



8. Chromatic Scale



WTAMU Band Camp

Alto Saxophone

HS Year A Audition Material

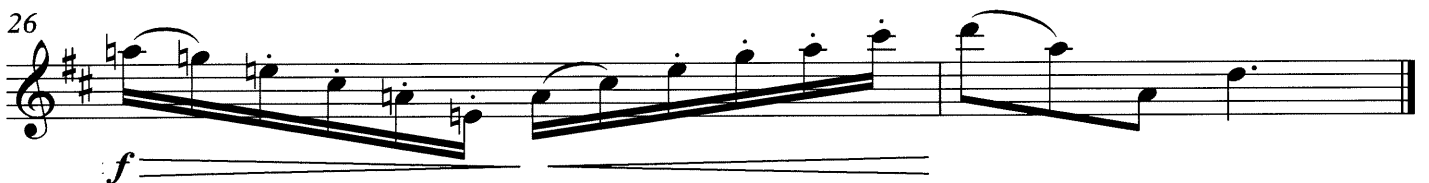
www.octatone.com

play to the end of the variation (double barline) with which you are most comfortable

BJ Brooks, ASCAP

percussion by Susan Martin Tariq

Moderato ♩ = 160 (suggested)



Baritone Saxophone

WTAMU Band Camp HS Year A Audition Material

www.octatone.com

play to the end of the variation (double barline) with which you are most comfortable

BJ Brooks, ASCAP
percussion by Susan Martin Tariq

Moderato ♩ = 160 (suggested)

mf f

mp mf mp mf

f mp f

p mf

p

mf f

p

f