

# TROMBONE

## SELECTED STUDIES FOR TROMBONE

(Voxman/Rubank)

NOTE: NO REPEATS ARE TO BE TAKEN IN ANY EXERCISE.

**All years: To be performed on a tenor slide trombone.** There are some etudes that do not match the trumpet, baritone, bass trombone and tuba etudes because of the differences in slide and valve techniques required.

### YEAR A

**Page 19**

*Largo cantabile* by Gatti

♩ = 56-66

Play from the beginning to the first note on line 7 (measure 21).

**Page 15**

*Vivace* by Bohme

♩ = 66-76

Play all.

#### Known Errata:

In measure ten not counting the pickup note, all A's should be A $\flat$ .

### YEAR B

**Page 30**

*Adagio cantabile* by Duhem

♩ = 60-72

Play from the beginning to the third beat of measure 3 on line 6.

**Page 3**

*Alla Breve* by Bohme

♩ = 96-104

Play all.

### YEAR C

**Page 43**

*Andante affettuoso* by Dieppo

♩ = 48-56

Play from the beginning to the first note of line 6.

#### Known Errata:

4th measure of 4th line, 4th note should be D $\sharp$ .

**Page 25**

*Allegretto* by Bohme

♩ = 88-96

Play all.

### YEAR D

**Page 26**

*Andante con moto* by Blazhevich

♩ = 88-96

Play from the beginning to the double bar on line 6.

**Page 33**

*Allegro Mosso*

♩ = 72-92

Play all.

### YEAR E

**Page 13**

*Valse-Lentement* by Bohme

♩ = 70-80

Play the first five lines.

**Page 14**

*Allegro marziale* by Gatti

♩ = 112-120

Play to the first note of measure 3 on line 8 (dotted half C).

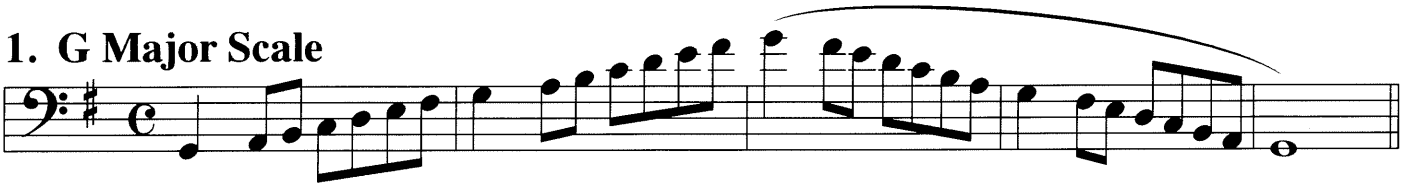
#### Known Errata:

The second note in measure 26 should be a Concert F.

# ATSSB Trombone Scales

Scales should be performed as written and may or may not be performed connected. All scales are to be played at a minimum of  $\text{♩} = 120$

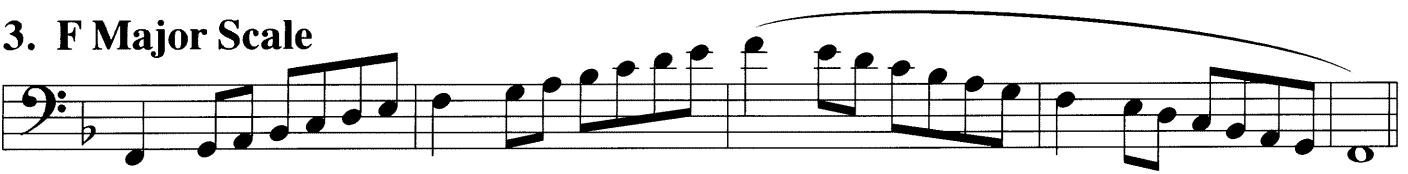
## 1. G Major Scale



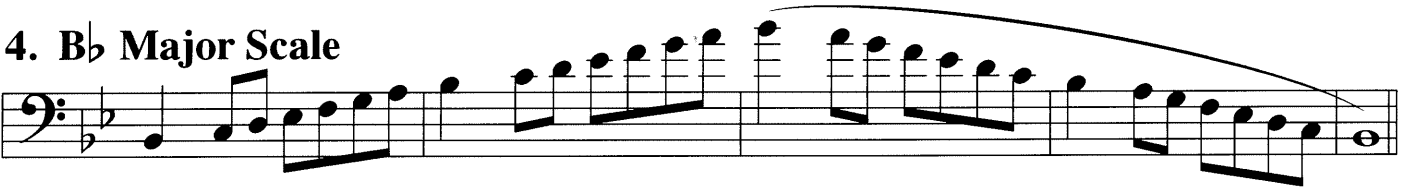
## 2. C Major Scale



## 3. F Major Scale



## 4. B♭ Major Scale



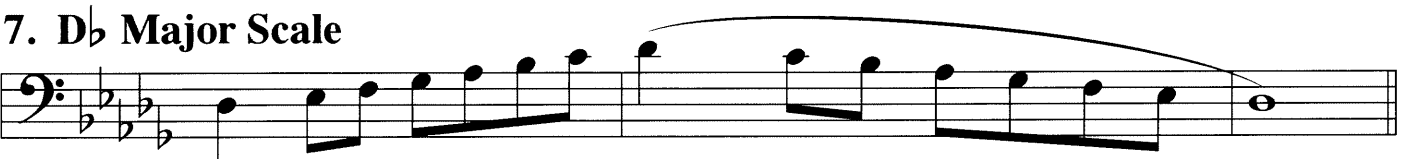
## 5. E♭ Major Scale



## 6. A♭ Major Scale



## 7. D♭ Major Scale



## 8. Chromatic Scale



Two staves of music in bass clef with a key signature of two sharps (F# and C#). The first staff contains a series of eighth notes with slurs and accents. The second staff continues this pattern, ending with a *rall.* marking.

Andante affettuoso

DIEPPO

A large bracket on the left side of the first staff indicates the beginning of a section. The first staff starts with a piano (*p*) dynamic. The second staff features a *dolce* dynamic. The third staff has a *dolce* dynamic. The fourth staff has a *sf* dynamic. The fifth staff has a *sf* dynamic. The sixth staff has a *dim.* dynamic. The seventh staff has a *rit.* marking. The eighth staff has a *a tempo* marking. The ninth staff has a *rit.* marking. The tenth staff has a *rit.* marking.

Allegretto

*p légère*

*mf*

*pp*

*p*

*p*

*mf*