

# ATSSB Baritone Bass Clef Scales

Scales should be performed as written and may or may not be performed connected. All scales are to be played at a minimum of  $\text{♩} = 120$

## 1. G Major Scale



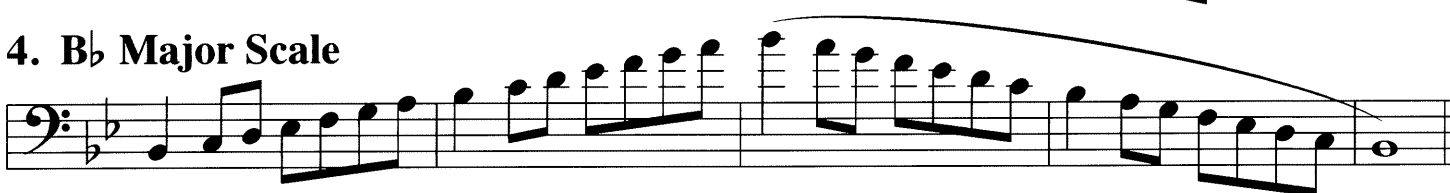
## 2. C Major Scale



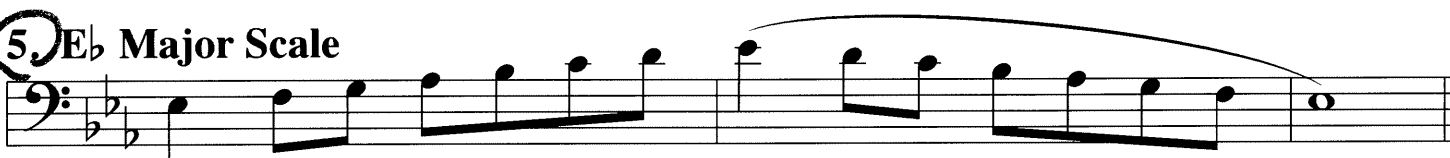
## 3. F Major Scale



## 4. Bb Major Scale



## 5. Eb Major Scale



## 6. Ab Major Scale



## 7. Db Major Scale



## 8. Chromatic Scale



Trombone/Euphonium **WTAMU Band Camp**  
**HS Year A Audition Material**

play to the end of the variation (double barline) with which you are most comfortable

www.octatone.com

BJ Brooks, ASCAP

percussion by Susan Martin Tariq

**Moderato** ♩ = 160 (suggested)  
Theme

5/8

*mf* *f*

5

*mp* *mf* *mp* *mf*

9

*f* *mp* *f*

13

*p* *mf*

17

*p*

20

*mf* *f*

24

*p*

26

*f*