

BASS TROMBONE**Transcribed from SELECTED STUDIES FOR BARITONE**

(Only available from ATSSB by permission of Rubank)

(Voxman/Rubank)

NOTE: NO REPEATS ARE TO BE TAKEN IN ANY EXERCISE.**YEAR A****Etude No. 1***Largo cantabile by Gatti*

♩ = 56-66

Start at the beginning and stop after the first note C on line 7.

Known Errata:

1. In measure eight, the marking "f lebile" should be "flebile" - meaning "mournfully".

Etude No. 2*Vivace by Bohme*

♩ = 66-76

Play all.

Known Errata:

1. In measure ten not counting the pickup note, all A's should be A♯.

YEAR B**Etude No. 1***Adagio Cantabile by Duhem*

♩ = 60-72

Play all.

Etude No. 2*Alla Breve by Bohme*

♩ = 96-104

Play all.

YEAR C**Etude No. 1***Adagio Cantabile by Duhem*

♩ = 44-50

Play from the last measure of the 3rd line to the end.

Etude No. 2*Allegretto by Bohme*

♩ = 88-96

Play all.

YEAR D**Etude No. 1***Adagio cantabile by Gallay*

♩ = 60-72

Start on measure 2 of line 2 and play to the end.

Etude No. 2*Allegro Mosso*

♩ = 72-92

Play all.

YEAR E**Etude No. 1***Valse-Lentement by Bohme*

♩ = 70-80

Play all.

Etude No. 2*Allegro marziale by Gatti*

♩ = 112-120

Play all.

Known Errata:

- The second note in measure 26 should be a Concert F.

ATSSB Bass Trombone Scales

Scales should be performed as written and may or may not be performed connected. All scales are to be played at a minimum of $\text{♩} = 120$

1. G Major Scale



2. C Major Scale



3. F Major Scale



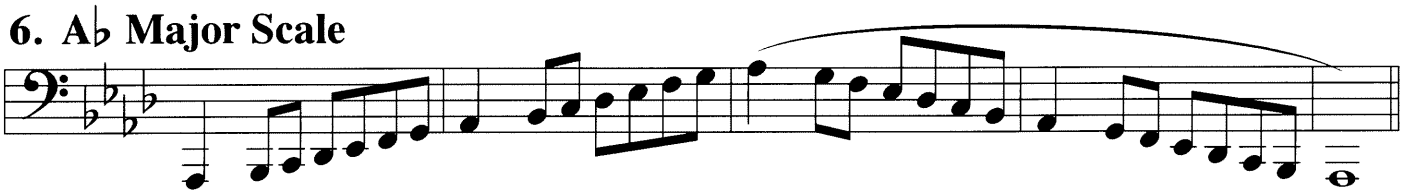
4. Bb Major Scale



5. Eb Major Scale



6. Ab Major Scale



7. Db Major Scale



8. Chromatic Scale



Play from the last measure of the 3rd line to the end.

Bass Trombone
ATSSB excerpt No. 1
Year C

E^b Major

Excerpted from the Rubank
Selected Studies for Baritone

DUHEM

Adagio cantabile $\text{♩} = 44-50$

p sostenuto

cresc. *p* piu mosso

rall. *pp* a tempo

p

f > *p* *f* > rall.

f a tempo *p*

f rall.

p

f rall.

f >

Copyright © by Rubank, Inc.
International Copyright Secured
All Rights Reserved

Bass Trombone
ATSSB etude No. 2
Year C

B^b Minor

Excerpted from the Rubank
Selected Studies for Baritone

BOHME

Allegretto ♩ = 88-96

p legere

simile *mf*

pp

p

p

mf

mf

mf