

BASS TROMBONE**Transcribed from SELECTED STUDIES FOR BARITONE**

(Only available from ATSSB by permission of Rubank)

(Voxman/Rubank)

NOTE: NO REPEATS ARE TO BE TAKEN IN ANY EXERCISE.**YEAR A****Etude No. 1***Largo cantabile by Gatti*

♩ = 56-66

Start at the beginning and stop after the first note C on line 7.

Known Errata:

1. In measure eight, the marking "f lebile" should be "flebile" - meaning "mournfully".

Etude No. 2*Vivace by Bohme*

♩ = 66-76

Play all.

Known Errata:

1. In measure ten not counting the pickup note, all A's should be A♭.

YEAR B**Etude No. 1***Adagio Cantabile by Duhem*

♩ = 60-72

Play all.

Etude No. 2*Alla Breve by Bohme*

♩ = 96-104

Play all.

YEAR C**Etude No. 1***Adagio Cantabile by Duhem*

♩ = 44-50

Play from the last measure of the 3rd line to the end.

Etude No. 2*Allegretto by Bohme*

♩ = 88-96

Play all.

YEAR D**Etude No. 1***Adagio cantabile by Gallay*

♩ = 60-72

Start on measure 2 of line 2 and play to the end.

Etude No. 2*Allegro Mosso*

♩ = 72-92

Play all.

YEAR E**Etude No. 1***Valse-Lentement by Bohme*

♩ = 70-80

Play all.

Etude No. 2*Allegro marziale by Gatti*

♩ = 112-120

Play all.

Known Errata:

- The second note in measure 26 should be a Concert F.

ATSSB Bass Trombone Scales

Scales should be performed as written and may or may not be performed connected. All scales are to be played at a minimum of $\text{♩} = 120$.
Scales should be performed in order without delay between scales.

1. G Major Scale



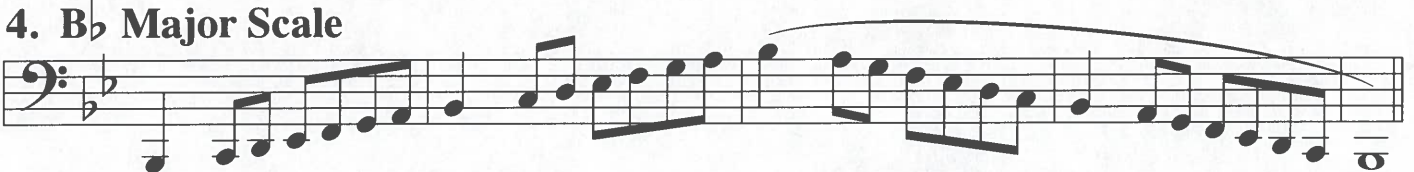
2. C Major Scale



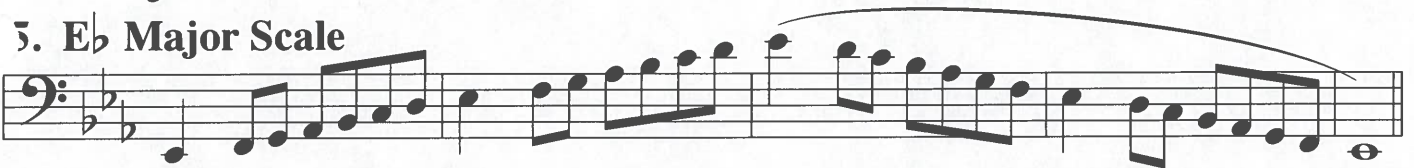
3. F Major Scale



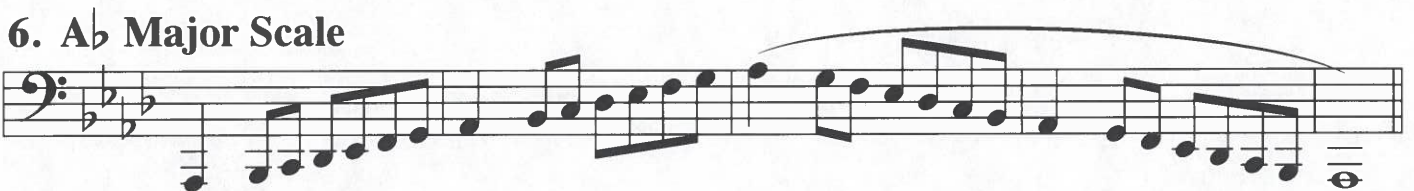
4. B♭ Major Scale



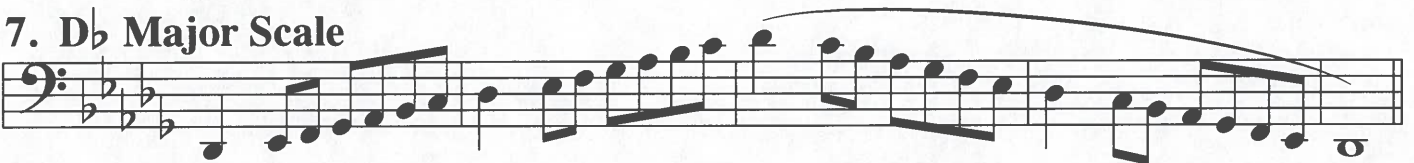
5. E♭ Major Scale



6. A♭ Major Scale



7. D♭ Major Scale



8. Chromatic Scale



Bass Trombone
ATSSB etude No. 1
YEAR D

B \flat Major

Excerpted from the Rubank
Selected Studies for Baritone

GALLAY

Adagio cantabile $\text{♩} = 60-72$

p **Start here** *f*

p *f*

p *p*

mf *pp* poco a poco accel.

a tempo

pp *mf*

f *rall.*

(1)

(2)

Copyright © by Rubank, Inc.
International Copyright Secured
All Rights Reserved

E^b Minor

Excerpted from the Rubank
Selected Studies for Baritone

GATTI

Allegro mosso ♩ = 72-92

ff
vigoroso

f

p

cresc.

f *p* *f*

p *cresc. poco a poco*

f

p *cresc. poco a poco*

f *p* *pp*

cresc. *f*