



Tuba Celina High School Band Auditions

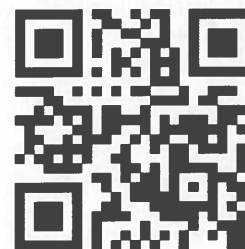


Woodwind and Brass Only

Band placement auditions will be held the week of April 29th-May 3rd. All students will play for Mr. Weddle (woodwinds) or Mr. Hille (brass) in person with a metronome. Students will sign up for a time (on office window) that they will play. There will be times listed during class and before/after school that week and will be on a "first come-first served" basis. Mr. Weddle and Mr. Hille will come to Moore Middle School and audition all 8th graders during their class period. This audition will determine band placement for the 2024-2025 school year. **All bands at Celina High School compete at a high level and this is to determine in which band you would be the most successful (there are no "bad" bands in Celina).**

Materials

Concert F and Concert Eb Scales from the ATSSB Scale Sheet
 Chromatic Scale from the ATSSB Scale Sheet
 WTAMU HS Etude, divided into three parts. (Theme, Var. 1, Var. 2)
 Var. 3 is NOT REQUIRED



>>Scan the QR code on the right or visit CelinaBand.com/hs for materials>>

Scoring Rubric

BREAKDOWN OF SCORING					
	"Poor"	"Below Average"	"Average"	"Excellent"	"Superior"
Concert F Scale	1 Point	2 Points	3 Points	4 Points	5 Points
Concert Eb Scale	1 Point	2 Points	3 Points	4 Points	5 Points
Chromatic Scale	1-3 Points	4-6 Points	7-9 Points	10-12 Points	13-15 Points
Theme	1-5 Points	6-10 Points	11-15 Points	16-20 Points	21-25 Points
Variation 1	1-5 Points	6-10 Points	11-15 Points	16-20 Points	21-25 Points
Variation 2	1-5 Points	6-10 Points	11-15 Points	16-20 Points	21-25 Points
TOTAL	6-20	21-40	41-60	61-80	81-100

"Poor"	"Below Average"	"Average"	"Excellent"	"Superior"
SELDOM... -Characteristic, mature tone -Notes played accurately -Rhythmically accurate -Steady pulse, full tempo -Precise Articulations -Accurate Dynamics -Well-executed style	RARELY... -Characteristic, mature tone -Notes played accurately -Rhythmically accurate -Steady pulse, full tempo -Precise Articulations -Accurate Dynamics -Well-executed style	SOMETIMES... -Characteristic, mature tone -Notes played accurately -Rhythmically accurate -Steady pulse, full tempo -Precise Articulations -Accurate Dynamics -Well-executed style	USUALLY... -Characteristic, mature tone -Notes played accurately -Rhythmically accurate -Steady pulse, full tempo -Precise Articulations -Accurate Dynamics -Well-executed style	CONSISTENTLY... -Characteristic, mature tone -Notes played accurately -Rhythmically accurate -Steady pulse, full tempo -Precise Articulations -Accurate Dynamics -Well-executed style

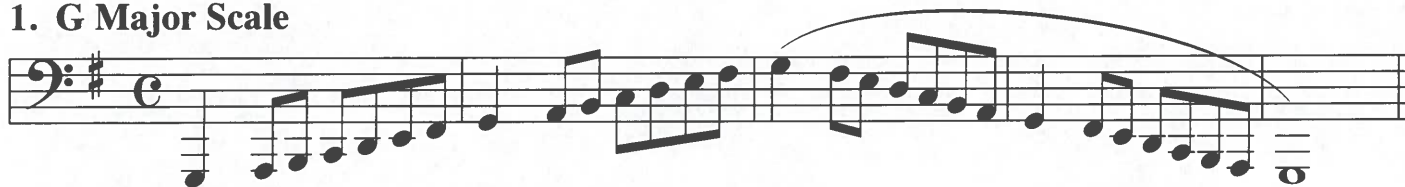
Clarification on Tempo

To be awarded the maximum possible points, auditions should be performed **with a metronome** and **at the suggested tempo markings** listed on the scale and etude pages.

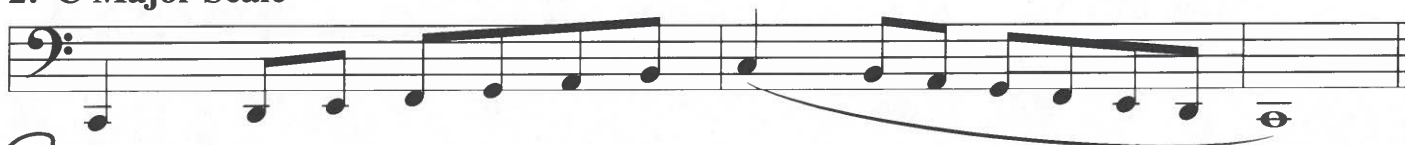
ATSSB Tuba Scales

Scales should be performed as written and may or may not be performed connected. All scales are to be played at a minimum of $\text{♩} = 120$.
Scales should be performed in order without delay between scales.

1. G Major Scale



2. C Major Scale



3. F Major Scale



4. B♭ Major Scale



5. E♭ Major Scale



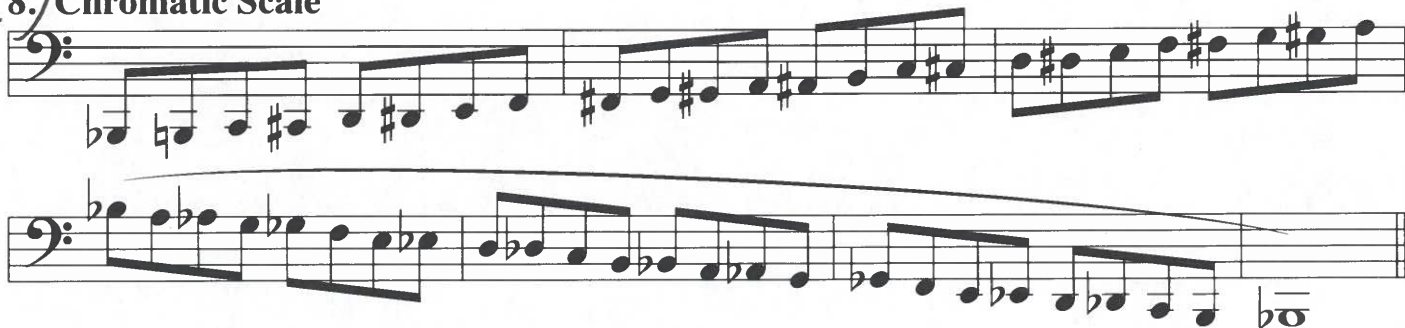
6. A♭ Major Scale



7. D♭ Major Scale



8. Chromatic Scale



WTAMU Band Camp

HS Year B Audition Material

Tuba

www.octatone.com

play to the end of the variation (double barline) with which you are most comfortable

BJ Brooks, ASCAP

percussion by Susan Martin Tariq

Moderato ♩ = 60+ (suggested)
Theme

5 *mf*

9 *f* *mf*

9 Var. 1

13 *f*

17 *p* *f*

17 Var. 2

21 *mf*

25 *f* *mp*

25 Var. 3

28 *mf* *f*

31 *f* *p*