

**TUBA****Transcribed from SELECTED STUDIES FOR BARITONE**

(Only available from ATSSB by permission of Rubank)

(Voxman/Rubank)

**NOTE: NO REPEATS ARE TO BE TAKEN IN ANY EXERCISE.****YEAR A****Etude No. 1***Largo cantabile by Gatti*

♩ = 56-66

Start at the beginning and stop after the first note C on line 7.

**Known Errata:**

1. In measure eight, the marking "f lebile" should be "flebile" - meaning "mournfully".

**Etude No. 2***Vivace by Bohme*

♩ = 66-76

Play all.

**Known Errata:**

In measure ten not counting the pickup note, all A's should be A♯.

**YEAR B****Etude No. 1***Adagio Cantabile by Duhem*

♩ = 60-72

Play all.

**Etude No. 2***Alla Breve by Bohme*

♩ = 96-104

Play all.

**YEAR C****Etude No. 1***Adagio Cantabile by Duhem*

♩ = 44-50

Play from the last measure of the 3rd line to the end.

**Etude No. 2***Allegretto by Bohme*

♩ = 88-96

Play all.

**YEAR D****Etude No. 1***Adagio cantabile by Gallay*

♩ = 60-72

Start on measure 2 of line 2 and play to the end.

**Etude No. 2***Allegro Mosso*

♩ = 72-92

Play all.

**YEAR E****Etude No. 1***Valse-Lentement by Bohme*

♩ = 70-80

Play all.

**Etude No. 2***Allegro marziale by Gatti*

♩ = 112-120

Play all.

**Known Errata:**

The second note in measure 26 should be a Concert F.

# ATSSB Tuba Scales

Scales should be performed as written and may or may not be performed connected. All scales are to be played at a minimum of  $\text{♩} = 120$ .  
Scales should be performed in order without delay between scales.

## 1. G Major Scale



## 2. C Major Scale



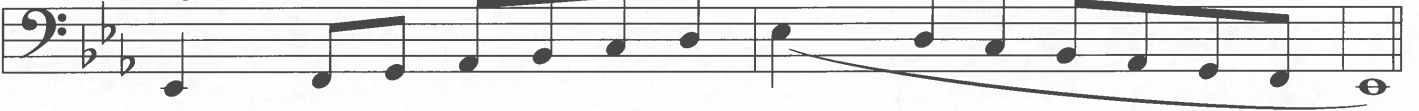
## 3. F Major Scale



## 4. B♭ Major Scale



## 5. E♭ Major Scale



## 6. A♭ Major Scale



## 7. D♭ Major Scale



## 8. Chromatic Scale



# B<sup>b</sup> Major

## Tuba ATSSB etude No. 1 Year D

Excerpted from the Rubank  
Selected Studies for Baritone

GALLAY

Adagio cantabile ♩ = 60-72

*p* **Start here** *f*

*p* *f*

*p* *p*

*mf* *pp* poco a poco accel.

*a tempo*

*pp* *mf*

*f* *rall.*

(1)

(2)

Copyright © by Rubank, Inc.  
International Copyright Secured  
All Rights Reserved

# E<sup>b</sup> Minor

Excerpted from the Rubank  
Selected Studies for Baritone

GATTI

Baritone ATSSB etude No. 2  
Year D

Allegro mosso ♩ = 72-92

*ff*  
*vigoroso*

*f*

*p*

*cresc.*

*f* *p* *f*

*p* *cresc. poco a poco*

*f*

*p* *cresc. poco a poco*

*f* *p* *pp*

*cresc.* *f*